

Health & Wellbeing Board

Integrated Commissioning Intentions – Children and Young People

January 2014

Bath and North East Somerset – *The place to live, work and visit*

Needs Assessment informing the integrated commissioning intentions

- » Joint Strategic Needs Assessment (JSNA)
- » Analyses of feedback from current commissions across the Local Authority and the CCG in B&NES
- » Needs assessments completed around 2013/4 re-commissions
- » Consultation on the priorities for the draft Children and Young People's Plan 2014/17
 - » Pupils Parliaments – Primary & Secondary June 2013
 - » Parent and Carer Consultations June –September 2013
 - » Children's Society – targeted consultation
 - » Children Trust Board stakeholder event –November 2013
- » SHEU – School Health Education Unit 2013
- » Feedback from the third and voluntary sector

Bath and North East Somerset – *The place to live, work and visit*

Emerging Priorities for the CYPP 2014/7 to influence commissioning intentions

- » Recognising and managing risk
- » Helping children to be a healthy weight
- » Improved emotional well-being and resilience for children and young people
- » Reduced rates of alcohol/substance misuse
- » Improved support to families with complex needs
- » Improved skills, education and employment
- » Reduce the health consequences of domestic violence
- » Support for children and young people with SEN, disabilities and lifelong conditions (SEND)
- » Integrated support for young people at transitions
- » Reduced educational inequalities for key groups of children/young people:
 - » Children in need/protection/care and care leavers
 - » Children on free school meals
 - » BME
 - » Young Carers
 - » SEN

Bath and North East Somerset – *The place to live, work and visit*

Specialist commissioning Intentions (Health) 2014/5

- » Virtual WARD
- » Improved support for children and young people with emotional health needs-ASD/ADHD Review
- » Improved support for children and young people who have unmet needs in the community- business cases for increased investment/quality improvement
- » Improved support for children/young people with complex health needs- Continuing Care manager to be appointed
- » Safeguarding standards reviewed
- » SEND: reform of education, health, social care planning
 - » Local offer of services 0-25
 - » Co-ordinated assessments 0-25
 - » Integrated plans 0-25
 - » Personal budgets

Bath and North East Somerset – *The place to live, work and visit*

Specialist commissioning Intentions 2012/3 : re-commissioning in process, contracts to be awarded in 2014

- » Short-break services for children and young people with disabilities 0-19
 - » Targeted and complex need level
 - » Incorporated personalization and SEND reforms
 - » One service extended to 21 to address transitions concerns
 - » New in-home respite service for children meeting continuing care criteria
- » Participation of the most vulnerable groups in services:
 - » Children on child protection plans
 - » Children in care (in care council)
 - » Children with a disability and transitioning into adulthood
 - » Primary/Youth Parliaments and Youth Democracy
- » Independent visitor service (for children in care)
- » Voluntary sector network

Bath and North East Somerset – *The place to live, work and visit*

Preventative Commissioning Intentions 2012/3 : re-commissioning in process, contracts to be awarded in 2014

Preventing Youth Offending service

Targeted early intervention and support for vulnerable young people identified at risk of offending. Will work closely with Attendance and Behaviour panels, schools, children's social care and other services for young people. Aim is to prevent young people from offending and to sustain crime free lives. Currently provided through a mentoring service.

Nurture Outreach service

This will be a new service to pilot an outreach service model as part of the nurture pathway to support children with emotional and behavioural difficulties in primary school. This pilot will inform longer term commissioning.

Bath and North East Somerset – *The place to live, work and visit*

Opportunities for integrated commissioning in 2015/6**Specialist commissioning**

- » Advocacy for children in need
- » Young Peoples substance misuse
- » Adoption support services
- » PCAMHS/CAMHS services
- » Community Health services

Preventative Commissioning

- » Community Play services
- » Children Centres and Early Support Services
- » 0-11 preventative services for children missing education
- » Youth Service
- » 11-19 youth offending services
- » Autistic Spectrum Disorder Support Service
- » Behaviour Support and alternative education service
- » Specialist Family Support Service

Bath and North East Somerset – *The place to live, work and visit***Opportunities for integrated commissioning in 2015/6, continued****Public Health Commissioning**

- » Public Protection/Health Improvement Service
- » Director of Public Healthy Settings (early years/schools/colleges)
- » Passport to health Community Activities/Food in education settings
- » Healthy Lifestyles Services

Adult services commissioning

- » Opportunities for improved commissioning against the pathways, integration, value for money and improved outcomes

Bath and North East Somerset – *The place to live, work and visit***Health & Wellbeing Board****Integrated Commissioning Intentions –
Adult Care & Health**

January 2014

Bath and North East Somerset – *The place to live, work and visit***Needs Assessment informing commissioning intentions:**

- » Joint Strategic Needs Assessment (JSNA)
- » Analyses of feedback from current commissions across the Local Authority and the CCG in B&NES
- » Supporting People & Communities commissioning programme themed reviews
- » Service user feedback
- » Targeted stakeholder engagement events
- » Review and analysis of activity/referral information, including adult safeguarding and Deprivation of Liberty Safeguarding (DOLS) referrals
- » Service mapping, gap analysis and draft Market Position Statement
- » National policy changes resulting in changes in entitlements (eg Care Bill, SEND Reform)
- » Research and evaluation (local, national or international) resulting in changes to best practice
- » Consultation on the priorities for the Health & Wellbeing Strategy; Dementia Action Plan; Autism Strategy and other key plans/strategies

Bath and North East Somerset – *The place to live, work and visit***Emerging priorities influencing current and future commissioning intentions (in addition to those set out in current strategies including the Health & Wellbeing Strategy):**

- » Shifting resource "upstream" to prevention and early intervention to achieve a more sustainable health and social care system in the face of demographic change
- » Need to address specific/immediate pressures in relation to increased referrals/activity especially in relation to adult safeguarding and DOLS
- » Council Medium Term Service & Resource Plan 2013/14-2015/16 and, specifically, savings targets for 2014/15 and 2015/16
- » Meeting the statutory requirements of the Care Bill, which comes in to force in 2015/16, including advice, information and support to self-funders and establishment of "care accounts" as well as increased entitlements for carers
- » Support for children and young people with Special Educational Need, disabilities and lifelong conditions (SEND) including integrated support for young people at transition to adulthood

Bath and North East Somerset – *The place to live, work and visit***Re-commissioning in process, contract award (if relevant*) and/or service in place in 2014/15:**

- » Advice & Information, including financial wellbeing
- » Diagnostic, Assessment, Information and Advice Service for adults with Autistic Spectrum conditions
- » Supported accommodation for people with autistic spectrum conditions and/or low level mental health problems
- » Housing related support for people with complex needs
- » Facilitation of engagement and communication with providers and other stakeholders via networks
- » Adult social care pathway redesign and expansion of reablement service

* sometimes, re-commissioning can involve pathway or service redesign & it is not necessary or appropriate to re-tender

Bath and North East Somerset – *The place to live, work and visit*

Re-commissioning in 2014/15, contract award (if relevant*) and/or service in place in 2015/16- 2016/17:

- » Community Services (health, social care and public health)
- » Independent Living Service
- » Advice, information and support for self-funders (requirement of Care Bill)
- » Advocacy services for adults with learning disabilities
- » Partnerships and engagement service for adults with learning disabilities
- » Direct Payment support service
- » Carers support service
- » Continuing Health Care and Emergency Domiciliary Care Services

* sometimes, re-commissioning can involve pathway or service redesign & it is not necessary or appropriate to re-tender

Bath and North East Somerset – *The place to live, work and visit*

Health & Wellbeing Board**Integrated Commissioning Intentions –
Public Health**

January 2014

Bath and North East Somerset – *The place to live, work and visit*

Needs assessment and issues informing commissioning intentions

- Local residents needs, identified through the Joint Strategic Needs Assessment (JSNA) www.bathnes.gov.uk/JSNA
- Local wellbeing priorities, set out in the Health and Wellbeing Strategy and the Annual Report of the Director of Public Health (DPH)
- Learning from local reviews during 2013/14, including an external assessment of our work on tobacco control and a council inquiry day on alcohol harm reduction.
- New evidence and policy emerging on key public health issues during 2013/14 and a review of local service provision for gaps or opportunities to improve quality
- In the future we expect Healthwatch to provide increasingly important information
- Partner's needs for public health evidence analysis and advice

Bath and North East Somerset – *The place to live, work and visit*

Emerging priorities for commissioning and strategy in 2014/15

- Implement the priorities arising out of key local needs assessments, strategies and reviews
- Influence the wider work of B&NES council to impact on the social and economic determinants of health and health inequalities
- Shifting investment from treatment to prevention
- Develop a shared work programme with colleagues in the council and other local and regional partners
- Meet our obligations to commission a range of specified public health services
- Support our Clinical Commissioning Group partners with public health information and advice in delivering their services

Bath and North East Somerset – *The place to live, work and visit*

New strategy, pathways, services or programmes expected to be in place in 2014/15

- Tobacco control strategy and action plan agreed and implementation underway
- Refresh healthy weight and physical activity strategies
- Progress delivery of the public health priorities within the Health and Wellbeing Strategy (including child obesity, alcohol, mental health, healthy and sustainable places)
- Agreed work programmes in place with partners in the council and neighbouring organisations
- New Contraception and Sexual Health service contracted by October 14
- Increase uptake of Health Checks across B&NES, with greater increase in areas of low uptake and higher risk of vascular disease
- A range of programmes to support mental wellbeing and reduce the risk of self-harm

Bath and North East Somerset – *The place to live, work and visit*

The Road ahead**Plan for 2014-15 &
5 year plan development**

Health and Wellbeing Board
29th January 2014

Healthier, Stronger, Together

Our refreshed strategic objectives

- Responding to the challenges of an aging population
- Improving quality and patient safety
- Promoting self-care which includes healthy lifestyles and improved wellbeing
- Improving the mental health and wellbeing of the population
- Improving consistency of care
- Reducing inequalities and social exclusion


Bath and North East Somerset
Clinical Commissioning Group

Commissioning Intentions for 2014/15

- Available on the CCG's website:-

www.banesccg.nhs.uk


Bath and North East Somerset
Clinical Commissioning Group

New Urgent Care Service Arrangements



- Urgent Care Centre, Out of Hours and Homeless Service
- Mobilisation, 1st April 2014


Bath and North East Somerset
Clinical Commissioning Group

New Maternity Service Arrangements



- Mobilisation of new maternity services contract, 1st June 2014


Bath and North East Somerset
Clinical Commissioning Group

Embed Community Cluster Model

- Proactive and Reactive
- Health visitors for the elderly
- Community matrons
- District nurses
- GP specialists
- Ward clerk
- Team meetings




Bath and North East Somerset
Clinical Commissioning Group

Future of RNHRD Services

- Working with Monitor and the RNHRD to ensure continuity of service provision




Bath and North East Somerset
Clinical Commissioning Group

New and continuing service arrangements

- Dementia Challenge Fund Projects
 - Sirona Care & Health Technology Libraries
 - RUH and community dementia care pathway
 - Curo: Rural independent Living Support Service
 - Carer's Centre and Age UK: home from Hospital Service
 - AWP care Home Support and Assessment Service

Other Developments

- Personal Health Budgets from 1st April 2014
- Implementation of Health Visitor role for gypsies, travellers and boat people
- Development of integrated diabetes services (acute, community and primary care)

Other potential service developments

- Referral Management Support Service
- Review of outcomes of winter pressure projects
- Review of Clinical Care Pathways
 - Ophthalmology
 - Pain services & back pain pathway
 - Fibromyalgia

Procurements

2014/15

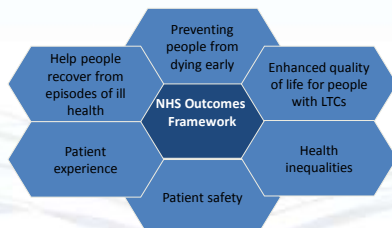
- Adult Continence Services
- Community Deep Vein Thrombosis Service
- Audiology Services
- Well-being College

2015/16

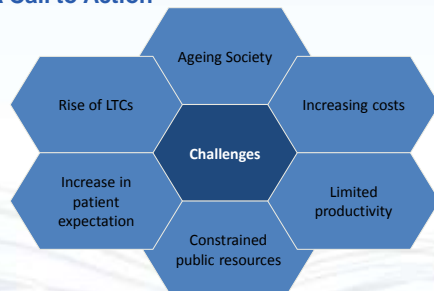
- Community Health & Social Care Services
 - Preparatory work
 - Future service models

Our Understanding - A Call to Action

A 'Call to Action' captures the quality outcomes that NHS England require commissioners to achieve locally. It also provides insight into the challenges and opportunities that lie ahead for the NHS nationally, and locally.



A Call to Action



A Call to Action




Bath and North East Somerset
Clinical Commissioning Group

Everyone Counts 2014-15 to 2018/19

Plan Components for CCGs

- 5 year Strategic Plan
- 2 year detailed Operational Plan
- Financial Plan
- Better Care Fund Plan


Bath and North East Somerset
Clinical Commissioning Group

CCG Development of its 5 year Plan

- **10th February** – Strategic Advisory Group of H&WB to look at Better Care Fund
- **12th February** – 1st Stakeholder workshop with providers
- **March & April 2014** – wider public engagement events
- **26th March** – Health and Well-being Board review of the CCG's plan


Bath and North East Somerset
Clinical Commissioning Group


Bath & North East
Somerset Council


Bath and North East Somerset
Clinical Commissioning Group

Thank you!
Any questions?

Healthier, Stronger, Together